

SHARP

PN-H701
LCD MONITOR



Emilie de Vabres (b. 1966)

Amsterdam—An Ancient City of Water

This oil painting beautifully depicts one of the many canals that grace the cityscape of Amsterdam, the Dutch capital known for its close relationship with water. The painting captures the delicate shades of green at play in the trees and the warm, shimmering tones that represent reflections on the water's surface. Beyond the canvas, one imagines lively encounters with the locals who live on the water in Amsterdam's famous houseboats.

*Surpassing Expectations—
4K Ultra HD Monitor for
Visual Quality on a Grand Scale*



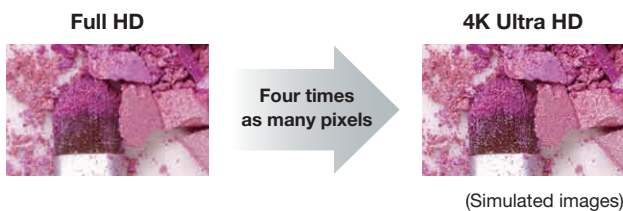
A Powerful and Capable 70-Inch-Class 4K Ultra HD

With a 70-inch-class screen and support for 4K Ultra HD (3,840 x 2,160-pixel) resolution, the PN-H701 offers the size and impact. More than just a superb digital signage solution, this monitor can be set up to provide eye-catching communication in a wide or public setting, the PN-H701 creates unprecedented new possibilities.

70-Inch-Class 4K Ultra HD

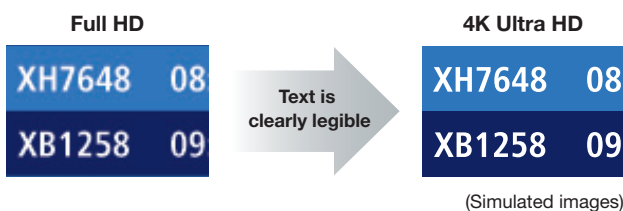
Image Quality beyond Your Imagination

Packed with state-of-the-art picture technologies, the PN-H701 is an outstanding communication platform. This 70-inch-class 4K Ultra HD monitor boasts a screen with the size and impressive super-high-resolution image quality to showcase all manner of content, from detailed text to beautifully textured graphics. With its huge and seamless screen and four times the resolution of 1080p full HD, it delivers all the detail, depth, and clarity that the content creator intended. Excelling in any indoor venue—whether in a retail, office, conference, or public setting—this is one monitor that will make an unforgettable impact on any audience.



4K Ultra HD Reveals the Finest Details

Despite the massive scale of the PN-H701 on-screen content is rendered in superbly detailed ultra-high definition. With movies and still images displayed at up to 4K Ultra HD, you get to see subtle textures and fine details not visible at full HD resolution. The high pixel count means there is no need to worry about jaggies, even on such a large screen.



Other Key Features

Stylish Design

The PN-H701 boasts an ultra-slim brushed-aluminium bezel that measures just 9 mm on the right, left, and top, and 14 mm on the bottom. The elegant and understated bezel helps the display to blend in naturally with its surroundings.



An Ever-Ready 4K Display

USB Media Player

The PN-H701 can be set up to play slideshows of promotional or informational content without the need for a PC. A built-in USB media player allows playback of 4K Ultra HD photos¹, full HD videos, and music stored on a connected USB memory device². For added security, the PN-H701 comes with a USB flash drive cover to prevent theft of the data storage device. Still images can also be saved to the display's internal memory and played from there, without using USB media. The media player's auto play function enables images to be played automatically.



Supported media formats: JPEG for photos; MP4, M2TS, 3GP, and MOV for videos; and WAV, WMA, M4A, and MP3 for music.

¹ Supports input of photos with resolution equivalent to 8K. (Such photos are displayed at 4K.)

² USB storage device sold separately.

4K Upscaling and Offset Function

The PN-H701 is equipped with an advanced upscaling engine that can transform standard full HD source content into 4K images—in real-time. When full HD content is expanded to 4K on this monitor, an offset function works to minimise blurriness and jaggies, making images much smoother than with standard upscaling.

4K Transfer at 60 fps via Single Cable

The PN-H701 supports the features defined in HDMI™ 2.0, which enable stunning 4K Ultra HD 60p video signals to be transmitted conveniently over a single cable. The monitor features four HDMI inputs that enable easy switching between multiple sources.

Monitor

age quality to make a major visual impact.
variety of settings. Whether in a retail, office,

Professional Operation

Choice of Installation Mode

The PN-H701 offers a choice of landscape or portrait installation, allowing you to select the mode that best suits your display content and application. While portrait installation offers the look and impact of a poster, landscape installation puts wide images on vivid display.

24/7 Operation

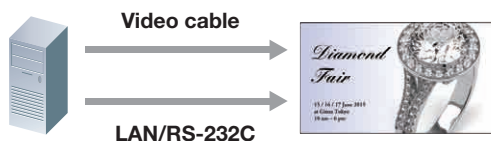
Designed for around-the-clock use and rugged operating conditions, the PN-H701 is a reliable and commanding presence in demanding 24-hour professional applications. Even after long hours of continuous operation*, this monitor delivers a sharp, clear picture.

* Image persistence may occur when the same static image is continuously displayed for extended periods of time. Image persistence can be gradually removed by displaying a video or moving graphics.

LAN/RS-232C Control

Thanks to its LAN/RS-232C interface, the PN-H701 can be easily controlled and monitored from a central location via a PC. This enables you to remotely turn the monitor on or off, switch its input, or adjust the screen and settings.

Note: Functions that can be controlled via LAN/RS-232C are limited. Some systems require an individual PC to control each monitor.

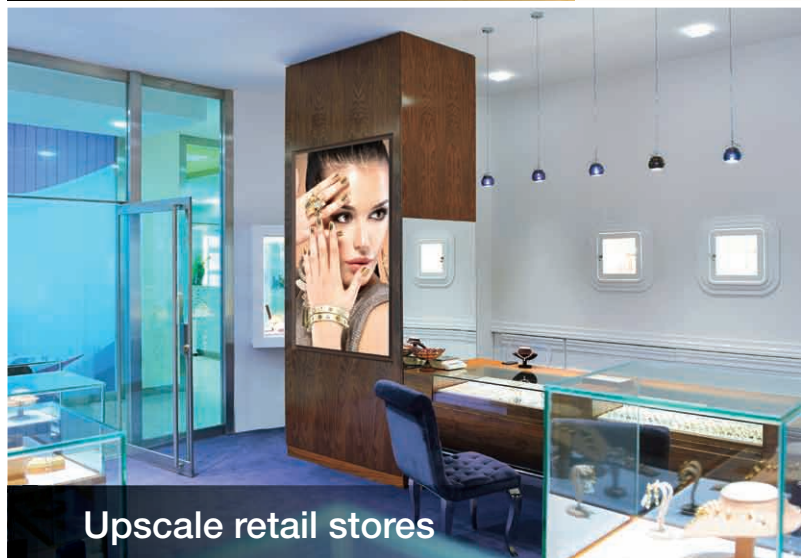


Built-In Speakers

Built-in speakers eliminate the need for external speakers and keep the PN-H701 stylishly streamlined. The speakers emit sound from both sides of the screen, making them ideal for conveying audio information.



Galleries and museums



Upscale retail stores



CAD design review



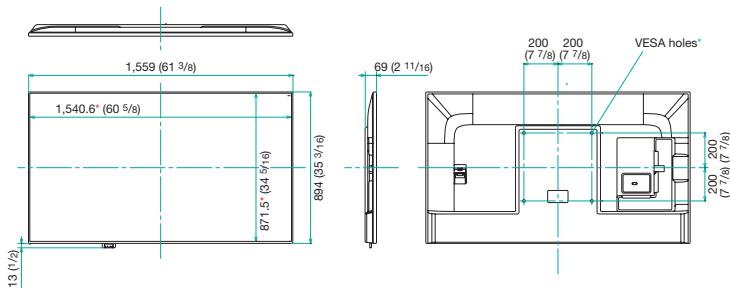
Airport terminals

Specifications

Model Name	PN-H701	
Installation	Landscape / Portrait	
LCD Panel	70-inch-class (69 1/2-inch [176.6 cm] diagonal) TFT LCD	
	Max. Resolution	3,840 x 2,160 pixels
	Max. Display Colours (approx.)	16.77 million colours
	Pixel Pitch (H x V)	0.401 x 0.401 mm
	Max. Brightness*1*2	400 cd/m ²
	Contrast Ratio	3000 : 1
	Viewing Angle (H/V)	176°/176° (CR ≥ 10)
	Active Screen Area (W x H)	1,538.9 x 865.6 mm (60 9/16" x 34 1/16")
	Response Time	6 ms (grey to grey, avg.)
Backlight	LED, edge lit	
Computer Input	Video	HDMI , Analogue RGB
	Synchronisation**	Horizontal/vertical separate (TTL: positive/negative)
	Plug & Play	VESA DDC2B
Input Terminals*3	HDMI x 4: (HDCP1.4 compatible: HDMI 1 – HDMI 3), (HDCP2.2 compatible: HDMI 4), (ARC compatible: HDMI 1), (MHL compatible: HDMI 4), Mini D-sub 15-pin x 1, RS-232C x 1**4,5, USB x 1 (photo, video, music)*6, 3.5 mm-diameter mini stereo jack x 1	
Output Terminals*3	Digital audio output (optical) x 1, 3.5 mm-diameter mini stereo jack x 1	
Input /Output Terminals*3	LAN: 10Base-T/100BASE-TX x 1	
Built-in Speakers	10 W + 10 W	
Mounting	VESA (4 points), 400 mm (15 3/4") pitch, M6 screw	
Power Supply	100V–240V AC, 50/60 Hz	
Power Consumption	270 W	
Environmental	Operating Temperature	0°C to 40°C
	Operating Humidity	20% to 80% RH (no condensation)
Dimensions (W x D x H) (approx.)	1,559 x 69 x 894 mm	
(display only)	(61 3/8" x 2 11/16" x 35 3/16")	
Weight (approx.)	38.0 kg (83.8 lbs)	
Main Accessories	Remote control unit x 1, cable clamps x 4, cable clamps (insertion type) x 2, power cord x 1, R-6 battery (AA size) x 2, CD-ROM x 1, setup manual x 1, power cord clamp x 1, power cord clamp screw x 1, USB flash drive cover x 1, USB flash drive cover screw x 1, horizontal sticker (logo) x 1, vertical sticker (operation panel) x 1, RS-232C conversion cable (3.5 mm-diameter mini stereo jack) x 1, USB extension cable x 1	

*1 Brightness depends on input mode and other picture settings. Brightness level will decrease slightly over the lifetime of the product. Due to the physical limitations of the equipment, it is not possible to maintain a precisely constant level of brightness.
 *2 When installing the monitor in the portrait orientation, and the internal temperature of the monitor rises excessively, the brightness of the backlight automatically decreases in order to prevent a further temperature rise.
 *3 Use a commercially available connection cable for PC and other video connections.
 *4 Requires the bundled RS-232C conversion cable.
 *5 Only for command control.
 *6 Supported media formats: JPEG for photos; MP4, M2TS, 3GP, and MOV for videos; and WAV, WMA, M4A, and MP3 for music. Note: USB storage device sold separately.
 ** Sync-on green and composite sync are not supported.

Dimensions



Units: mm (inch)

* Screen dimensions

* To use the VESA-standard mounting bracket, use M6 screws that are 8 to 10 mm plus the thickness of the bracket.

Options (Sharp Digital Signage Software)

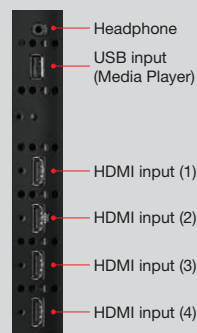
- PN-SS01 SHARP Digital Signage Software (Stand-Alone Version)
- PN-SS02 SHARP Digital Signage Software (Network Version)
- PN-SS05 SHARP Digital Signage Software (Pro Version)
- PN-SW05 SHARP Digital Signage Software (Pro Web Server Version)
- PN-SV01 SHARP Digital Signage Software (Viewer Version)

HDMI, the HDMI logo, and High-Definition Multimedia Interface are trademarks or registered trademarks of HDMI Licensing, LLC in the United States and other countries. MHL, the MHL logo, and Mobile High-Definition Link are trademarks or registered trademarks of MHL, LLC in the United States and other countries. All other brand names and product names may be trademarks or registered trademarks of their respective owners.

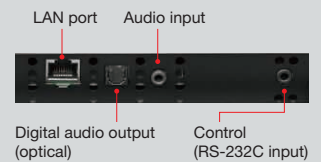
DESIGN AND SPECIFICATIONS ARE SUBJECT TO CHANGE WITHOUT PRIOR NOTICE.

Input/Output Terminals

(Side)



(Bottom)



(Back)



Distributed by:

SHARP

HDMI[™]
HIGH DEFINITION MULTIMEDIA INTERFACE

MHL
Mobile High-Definition Link